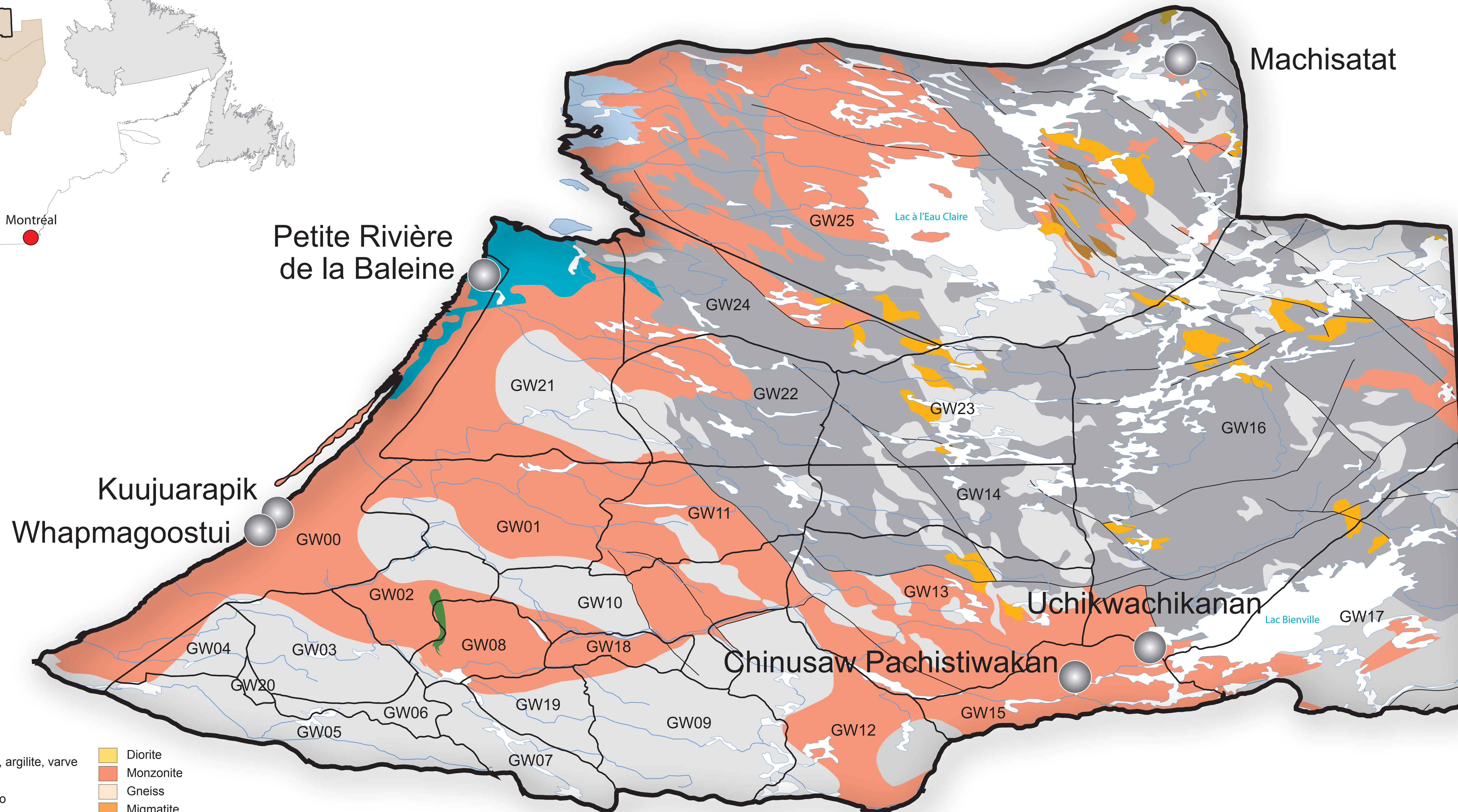
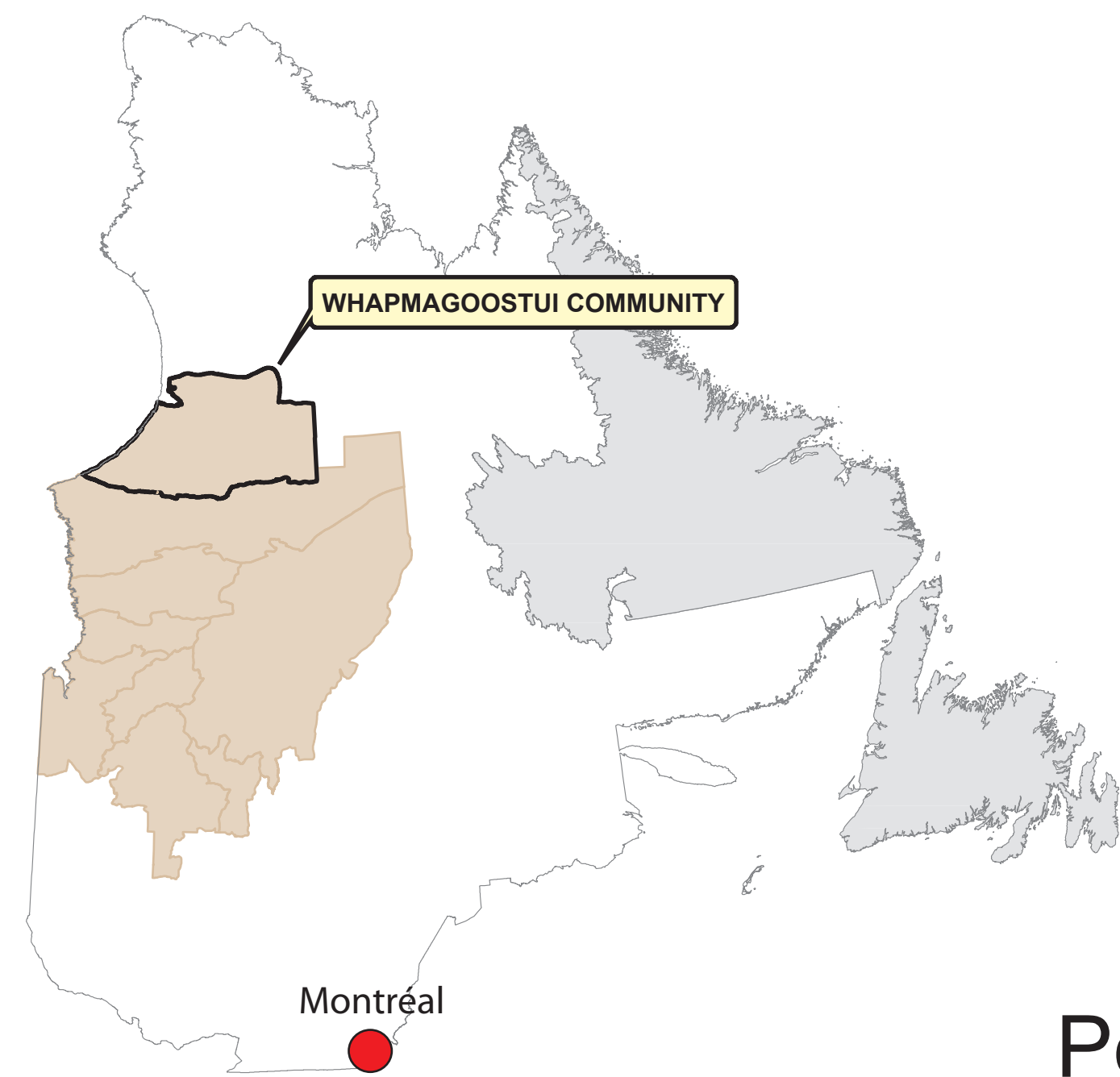


COMMUNITY OF WHAPMAGOOSTUI TRAPLINES & GEOLOGY



TRAPLINE	AREA (Km ²)
GW00	3 301.233
GW01	2 030.941
GW02	857.861
GW03	1 309.769
GW04	487.798
GW05	1 452.616
GW06	341.507
GW07	830.329
GW08	784.266
GW09	2 005.828
GW10	1 921.194
GW11	1 656.316
GW12	2 296.238
GW13	3 437.483
GW14	1 893.007
GW15	1 432.356
GW16	11 245.027
GW17	3 884.656
GW18	388.424
GW19	692.636
GW20	68.789
GW21	3 482.623
GW22	2 140.573
GW23	2 536.353
GW24	2 197.184
GW25	14 593.507

- Quaternary**
- Sand, esker, moraine, silt, argilite, varve
- Proterozoic**
- Dyke, Gabbro
 - Siltstone
 - Conglomerate
 - Carbonated Rock
- Archean**
- Granite
 - Granodiorite
 - Tonalite
 - Pegmatite
- Diorite
 - Monzonite
 - Gneiss
 - Migmatite
 - Paragneiss
 - Anorthosite
 - Felsic Volcanic Rock
 - Intermediary Volcanic Rock
 - Mafic Volcanic Rock
 - Amphibolite
 - Ultramafic Rock
 - Fault

CREE NATION OF WHAPMAGOOSTUI

Tel.: (819) 929-3384
PO Box 390, Whapmagoostui
Qc, JOM 1G0



Contact:
Chief Geologist: M. Youcef Larbi
(819) 978-0264 ext. 327