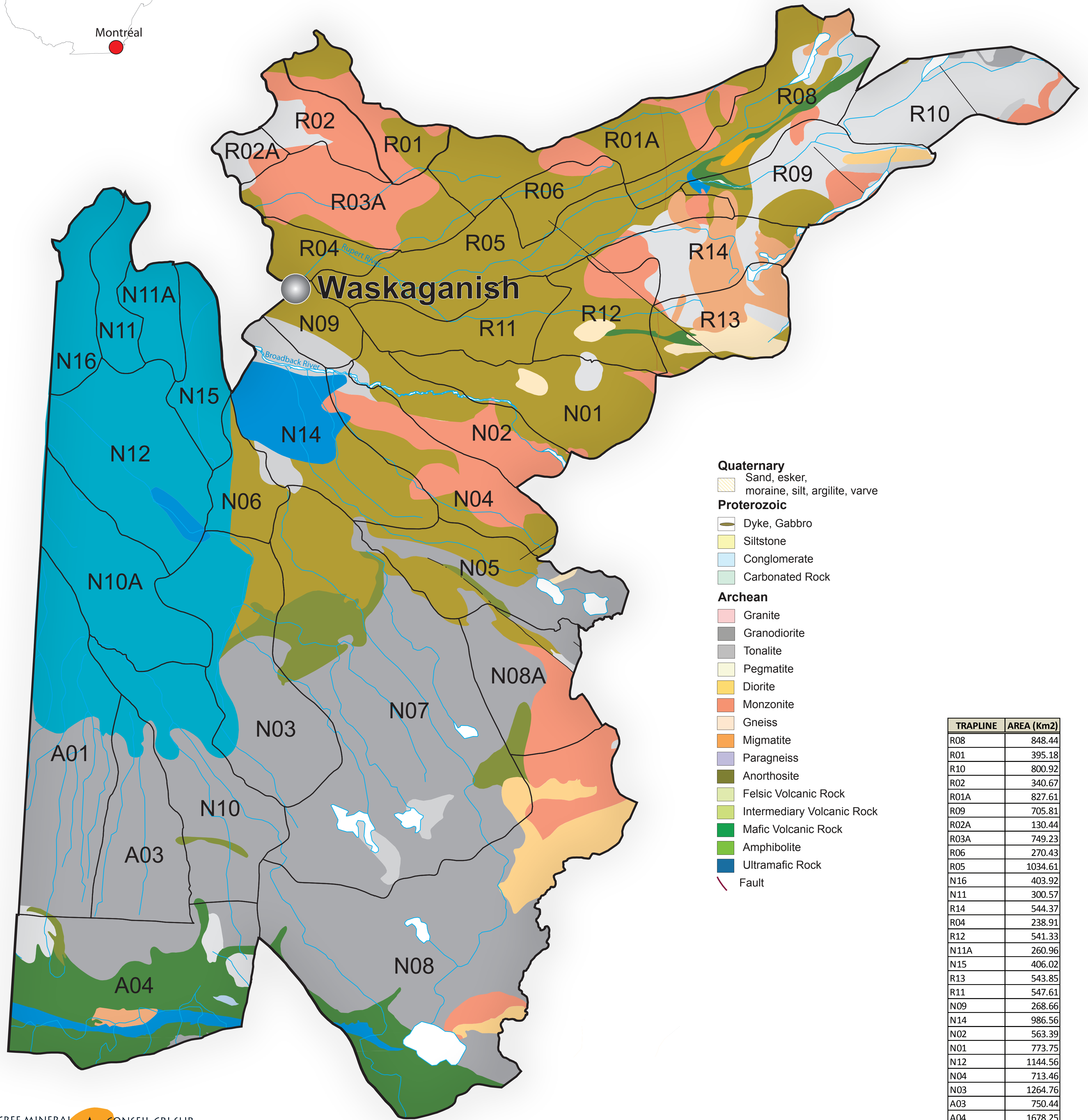
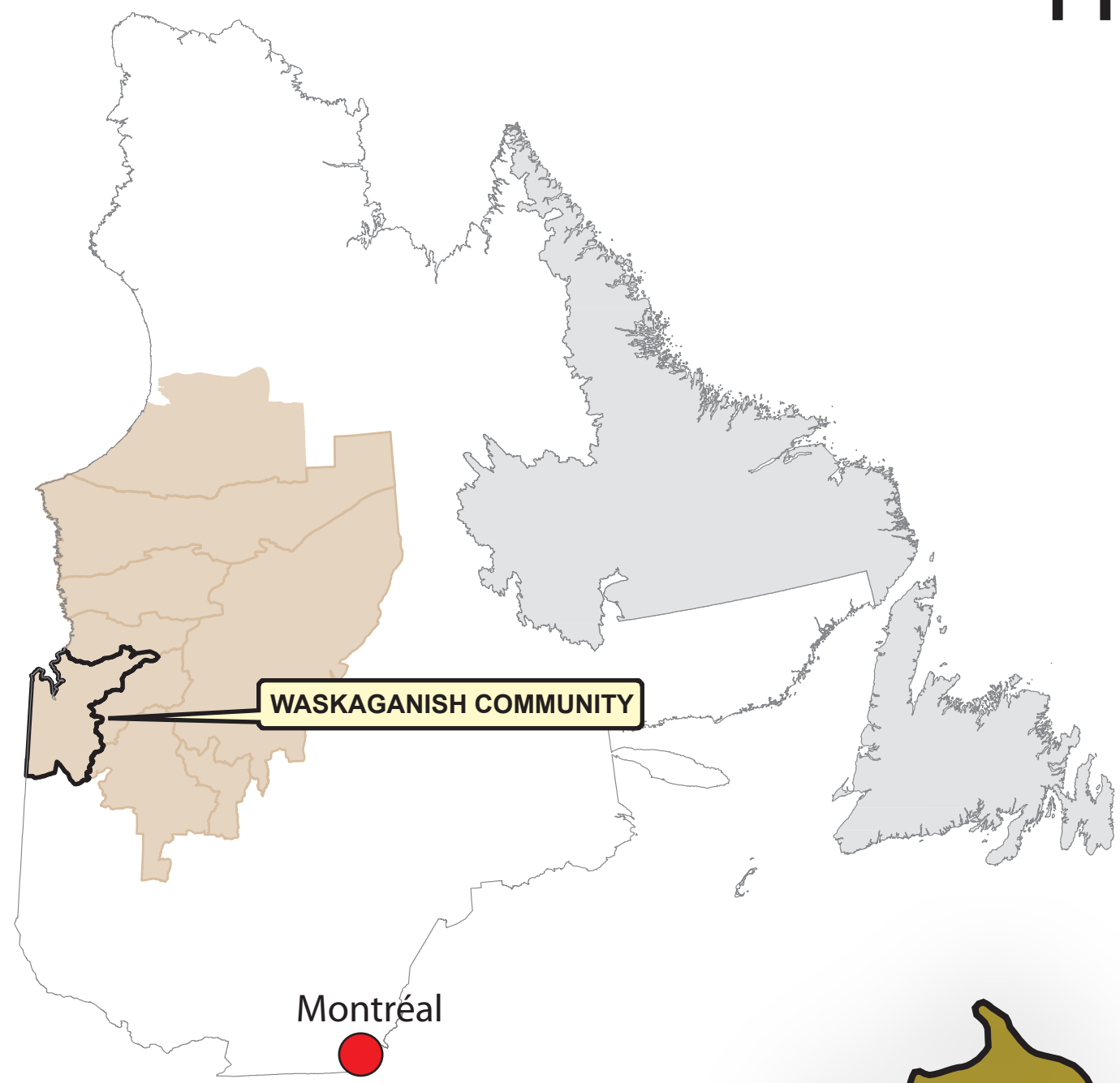


# COMMUNITY OF WASKAGANISH TRAPLINES & GEOLOGY



- Quaternary**
- Sand, esker, moraine, silt, argillite, varve
- Proterozoic**
- Dyke, Gabbro
  - Siltstone
  - Conglomerate
  - Carbonated Rock
- Archean**
- Granite
  - Granodiorite
  - Tonalite
  - Pegmatite
  - Diorite
  - Monzonite
  - Gneiss
  - Migmatite
  - Paragneiss
  - Anorthosite
  - Felsic Volcanic Rock
  - Intermediary Volcanic Rock
  - Mafic Volcanic Rock
  - Amphibolite
  - Ultramafic Rock
  - Fault

TRAPLINE	AREA (km <sup>2</sup> )
R08	848.44
R01	395.18
R10	800.92
R02	340.67
R01A	827.61
R09	705.81
R02A	130.44
R03A	749.23
R06	270.43
R05	1034.61
N16	403.92
N11	300.57
R14	544.37
R04	238.91
R12	541.33
N11A	260.96
N15	406.02
R13	543.85
R11	547.61
N09	268.66
N14	986.56
N02	563.39
N01	773.75
N12	1144.56
N04	713.46
N03	1264.76
A03	750.44
A04	1678.25
N08A	708.83
N10	1061.59
N07	3317.15
N05	847.82
N10A	876.70
A01	1313.22
N06	316.58
N08	3234.55

## CREE NATION OF WASKAGANISH

Tel.: (819) 895-8650  
70, Waskaganish Sreet  
Waskaganish, Qc, JOM 1R0



Contact:  
Chief Geologist: M. Youcef Larbi  
(819) 978-0264 ext. 327