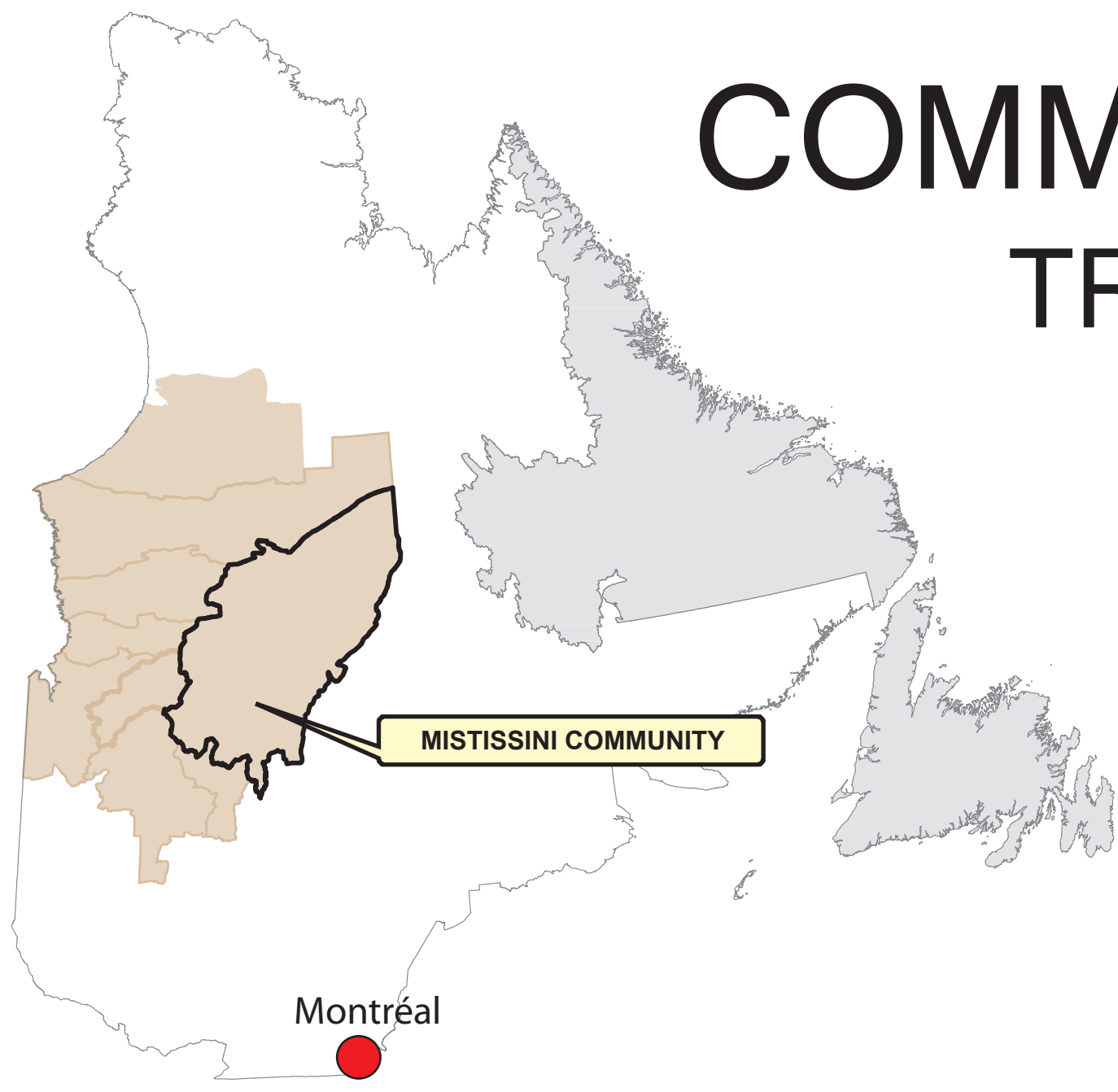
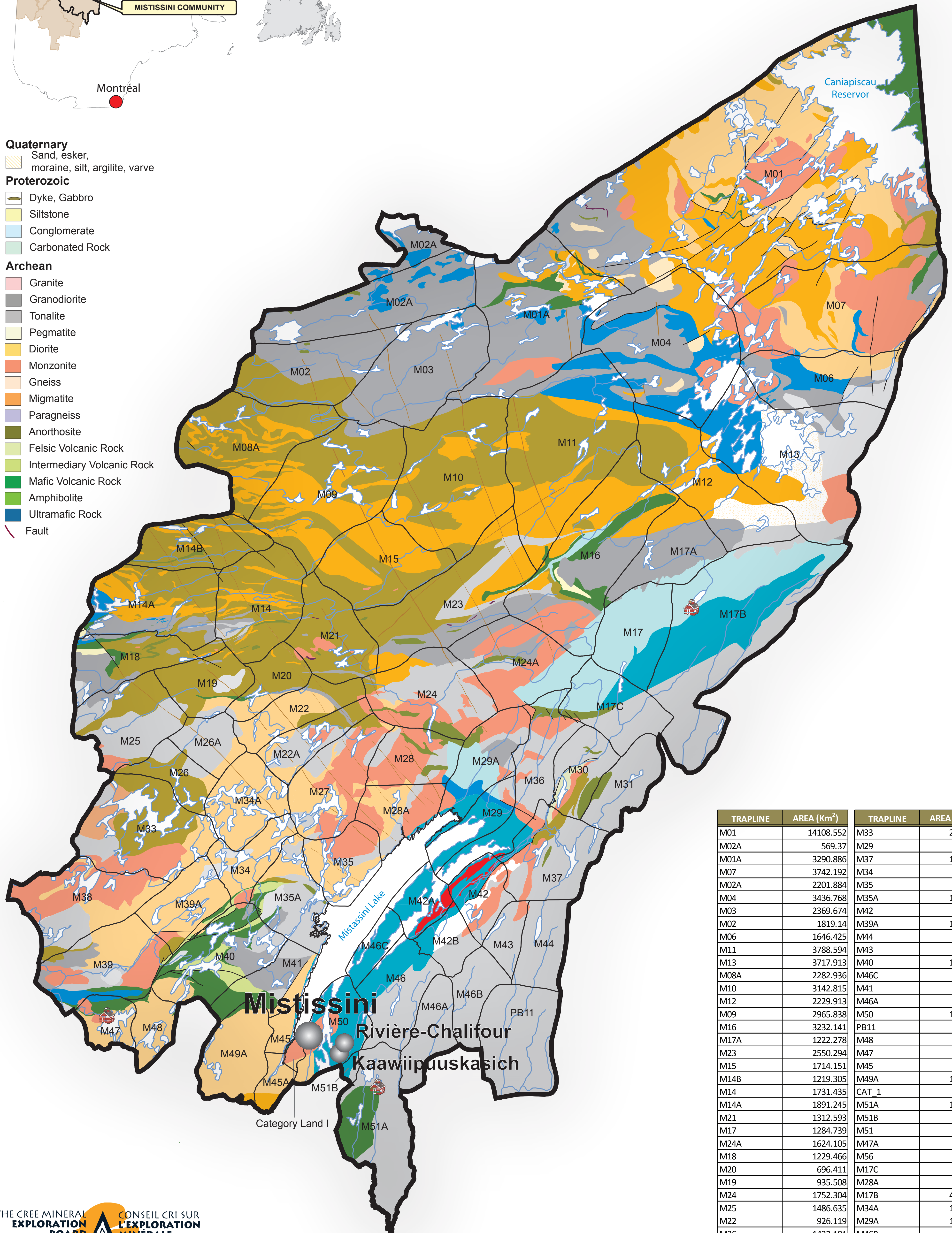


COMMUNITY OF MISTISSINI TRAPLINES & GEOLOGY



- Quaternary**
- Sand, esker, moraine, silt, argillite, varve
- Proterozoic**
- Dyke, Gabbro
 - Siltstone
 - Conglomerate
 - Carbonated Rock
- Archean**
- Granite
 - Granodiorite
 - Tonalite
 - Pegmatite
 - Diorite
 - Monzonite
 - Gneiss
 - Migmatite
 - Paragneiss
 - Anorthosite
 - Felsic Volcanic Rock
 - Intermediary Volcanic Rock
 - Mafic Volcanic Rock
 - Amphibolite
 - Ultramafic Rock
- Fault



TRAPLINE	AREA (Km ²)	TRAPLINE	AREA (Km ²)
M01	14108.552	M33	2239.667
M02A	569.37	M29	682.171
M01A	3290.886	M37	1504.192
M07	3742.192	M34	772.434
M02A	2201.884	M35	968.135
M04	3436.768	M35A	1144.092
M03	2369.674	M42	740.463
M02	1819.14	M39A	1040.537
M06	1646.425	M44	882.22
M11	3788.594	M43	425.902
M13	3717.913	M40	1626.563
M08A	2282.936	M46C	430.791
M10	3142.815	M41	880.552
M12	2229.913	M46A	799.283
M09	2965.838	M50	1023.584
M16	3232.141	PB11	1678.74
M17A	1222.278	M48	540.477
M23	2550.294	M47	555.593
M15	1714.151	M45	239.083
M14B	1219.305	M49A	1170.815
M14	1731.435	CAT_1	115.019
M14A	1891.245	M51A	1884.955
M21	1312.593	M51B	84.817
M17	1284.739	M51	254.873
M24A	1624.105	M47A	303.282
M18	1229.466	M56	473.895
M20	696.411	M17C	1222.2
M19	935.508	M28A	877.86
M24	1752.304	M17B	4402.786
M25	1486.635	M34A	1132.612
M22	926.119	M29A	1138.696
M36	1432.181	M46B	710.908
M22A	774.99	M42B	535.396
M26A	633.099	M42A	598.937
M27	1529.444	M39	1690.991
M30	844.019	M38	1778.938
M28	959.123	M46	1204.227
M31	907.055	M45A	318.441
M26	663.389		



CREE NATION OF MISTISSINI

Tel.: (418) 923-3461
187, Main Street, Mistissini, Qc, G0W 1C0



Contact:
Chief Geologist: M. Youcef Larbi
(819) 978-0264 ext. 327