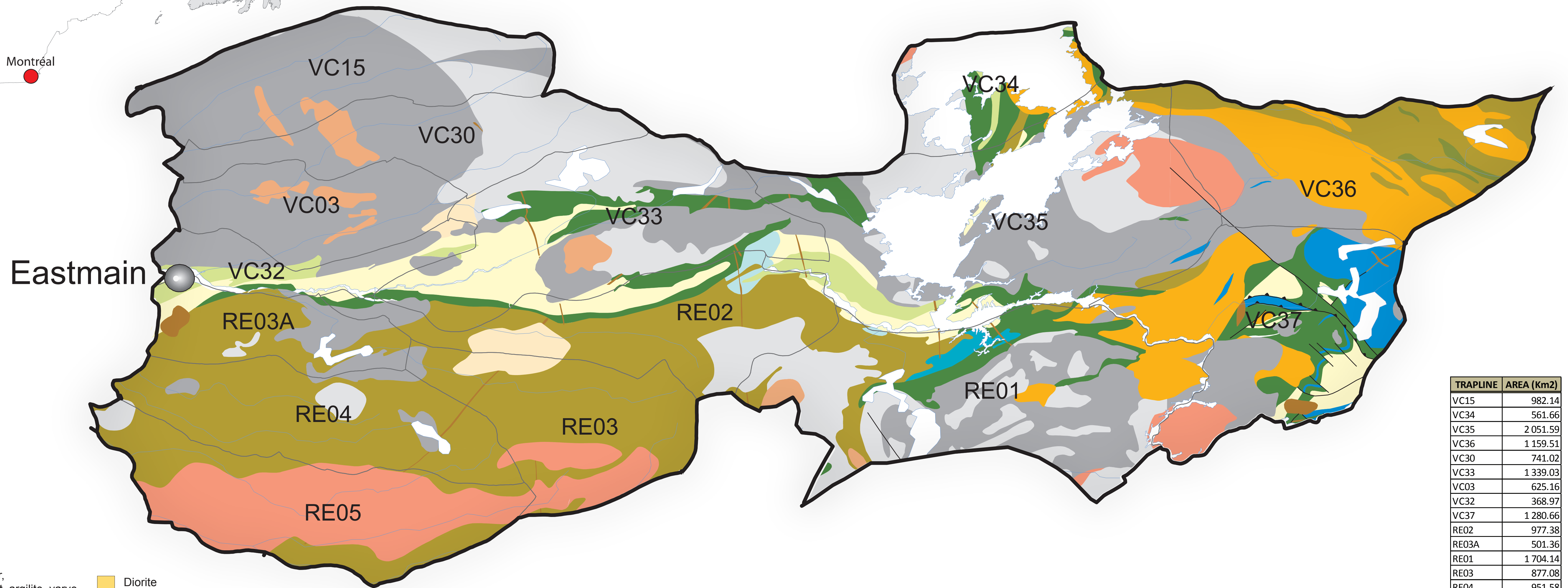
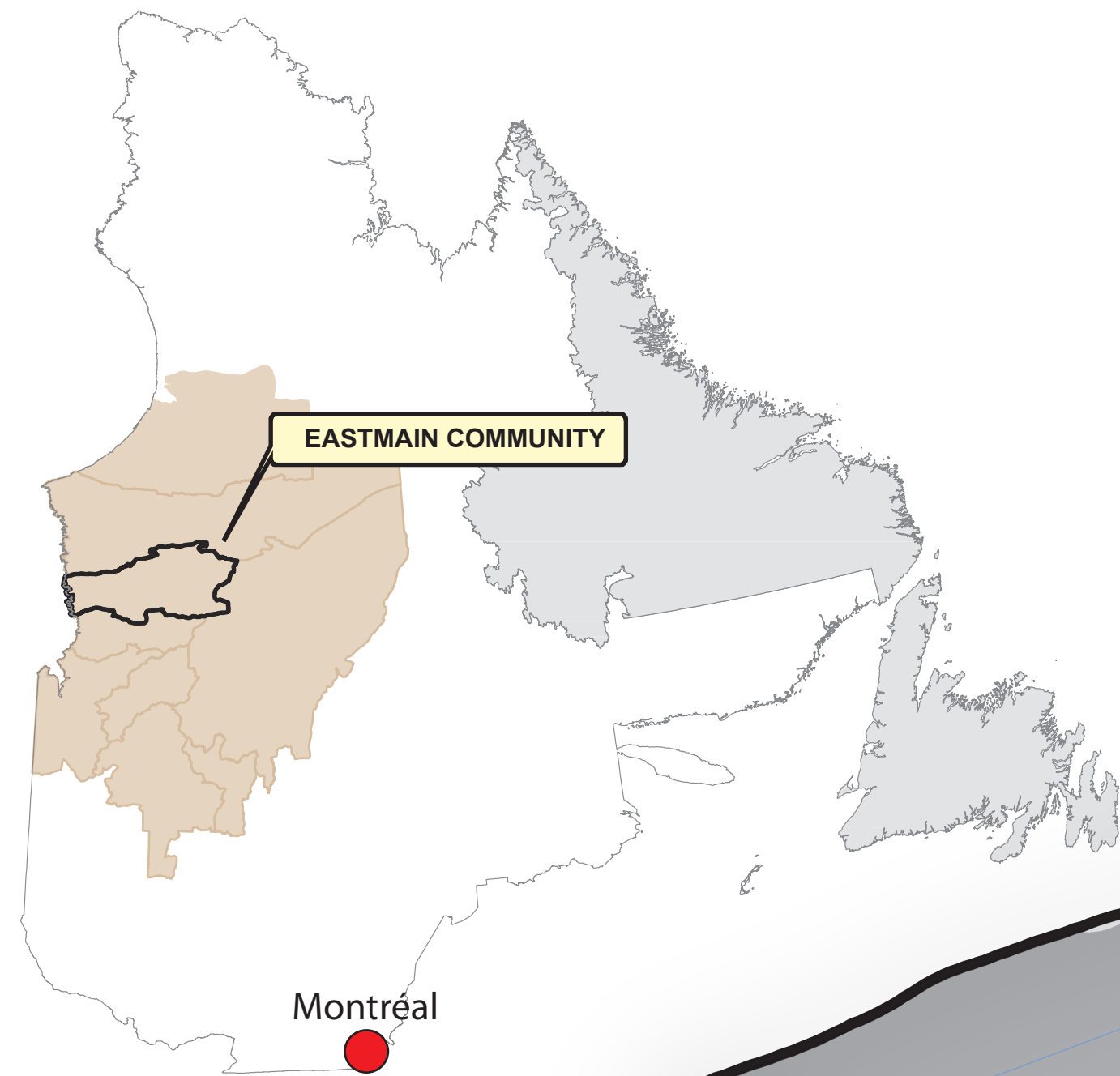


COMMUNITY OF EASTMAIN TRAPLINES & GEOLOGY



TRAPLINE	AREA (Km2)
VC15	982.14
VC34	561.66
VC35	2 051.59
VC36	1 159.51
VC30	741.02
VC33	1 339.03
VC03	625.16
VC32	368.97
VC37	1 280.66
RE02	977.38
RE03A	501.36
RE01	1 704.14
RE03	877.08
RE04	951.58
RE05	1 118.94

- Quaternary**
- Sand, esker, moraine, silt, argilite, varve
- Proterozoic**
- Dyke, Gabbro
 - Siltstone
 - Conglomerate
 - Carbonated Rock
- Archean**
- Granite
 - Granodiorite
 - Tonalite
 - Pegmatite
- Diorite
 - Monzonite
 - Gneiss
 - Migmatite
 - Paragneiss
 - Anorthosite
 - Felsic Volcanic Rock
 - Intermediary Volcanic Rock
 - Mafic Volcanic Rock
 - Amphibolite
 - Ultramafic Rock
 - Fault

CREE NATION OF EASTMAIN

Tel.: (819) 877-0211
76 Nouchimi
PO Box 90, Eastmain, Qc.
JOM 1W0



Contact:
Chief Geologist: M. Youcef Larbi
(819) 978-0264 ext. 327